



JP3 Rudder Bearings – Type 2

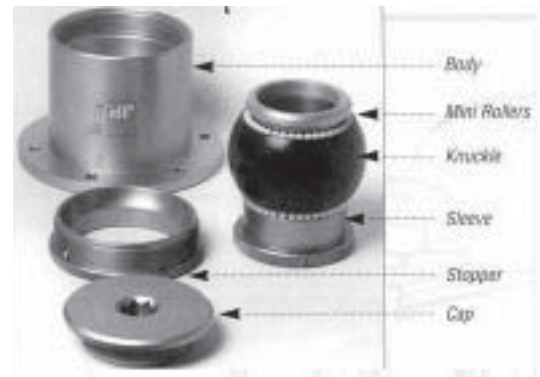
General Characteristics

The Type 2 rudder bearing are specially designed for racing boats and blue water boats.

- The Type 2 bearing will accommodate heavy axial and radial loads.
- It is mainly installed on metallic rudder stocks (F16pH, Titanium, Aluminium).
- The body is machined from Aluminum and anodized to class 15. The knuckle itself is Ertalyte, with upper and lower bearing races to accommodate the radial and axial loads.
- The height adjustment of the rudder is achieved with a threaded collar located on the rudder shaft (which must be made by JP3).
- Includes position for emergency tiller arm.
- Complete support of rudder.
- Allows for height adjustment of the rudder.
- Mounting and demounting of the rudder assembly is very quick.



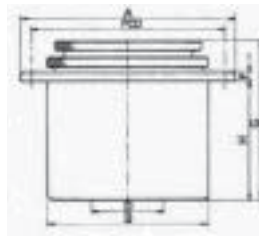
Type 2 : ref 20.14.48 (mounted)
"multifunction" rudder bearing.



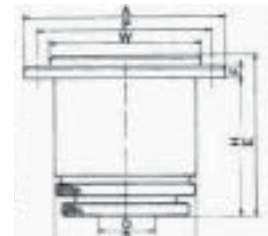
Type 2 : ref 20.14.48 (parts)



20.12
Adjustment to be done **below** the deck.



20.13
Adjustment to be done **above** the deck.



20.14
Adjustment to be done **below** the deck.
Supplied with a flush mount watertight deck cap.